

PUNTO EVO *flexo*

WALL AXIAL FANS



When Italian Design
meets Technology



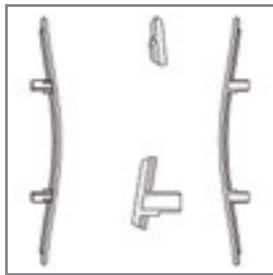
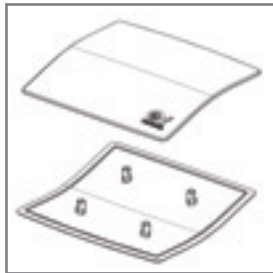
NEW



RESIDENTIAL VENTILATION

PUNTO EVO Flexo
WALL AXIAL FANS

Italian design, elegance and quality.



Vortice® has always considered product design of primary importance. Although the products are made to improve the quality of our life, they are also designed to have a pleasing appearance, as well as being both ergonomic and functional. From the '70s, the aesthetic appearance of Vortice products has been exceptional thanks to the collaboration of such prestigious international names as Zanuso, Sapper, Trabucco and Vecchi. The enormous effort put into achieving these results has undoubtedly lengthened the life of many of the products and has even made them "ageless". Over the years, Vortice® has gained a reputation for not only creating objects which are functional and technologically advanced, but also for creating products which are very pleasing to the eye.





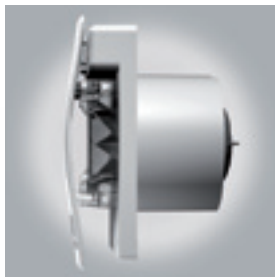
Key features

- **Extremely quiet**
26.9 Lp dB(A) for models Ø100
32.3 Lp dB(A) for models Ø120
- **IP 45**
High protection against jets of water suitable for installation in wet areas, such as bathrooms (even Zone 1), kitchens, laundries and basements.
- **Low power consumption**
9 W for models Ø100
13 W for models Ø120
- **High performance**
90 m³/h for models Ø100
175 m³/h for models Ø120
- **Reduced depth**
61,5 mm for models Ø100
71 mm for models Ø120
- **Compact size**
173 mm for models Ø100
193 mm for models Ø120
- **Unique design**
 - **LONG LIFE 30.000 h**





Product Specifications



- Front panel, motor holder and integrated backdraught shutter made of ABS thermoplastic shockproof and anti-UV resin.
- Helico-centrifugal mixed-flow impellers made of PP resin.
- Impellers and motor holder specifically designed for high performance, low power consumption and low noise emissions.
- Integrated butterfly backdraught shutter designed to prevent unwanted air inflows when the appliance is switched off.
- Long-life ball-bearing motors guaranteed for 30,000 hours continuous trouble-free operation.
- Designed to provide a low environmental impact, using recyclable materials and following the new “Design for Disassembly” technique to achieve easy and environmentally friendly disposal of components.
- Protection rating: IP45.
- Insulation class: II.

Installation

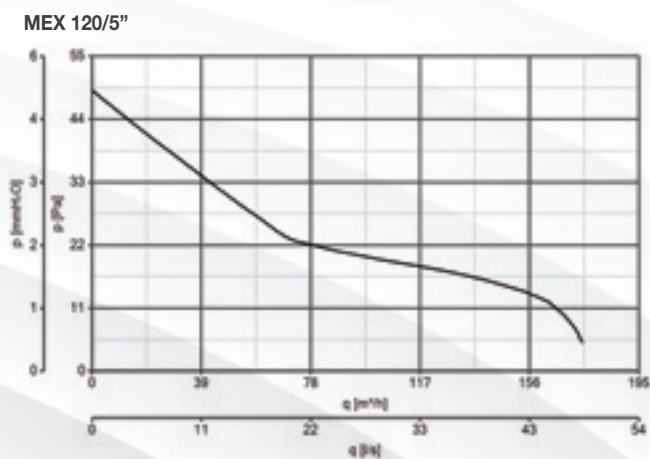
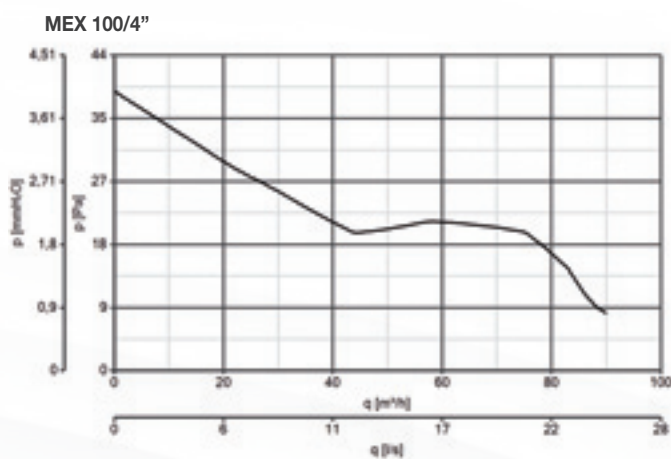


- Designed for direct air extraction outside or through short ducts.
- Typical wall/panel, false wall, ceiling and false ceiling installations.
- The reduced mounting depth makes it ideal to fit even when the installation space is limited due to the proximity of elbow bends (90°).

Technical Specifications

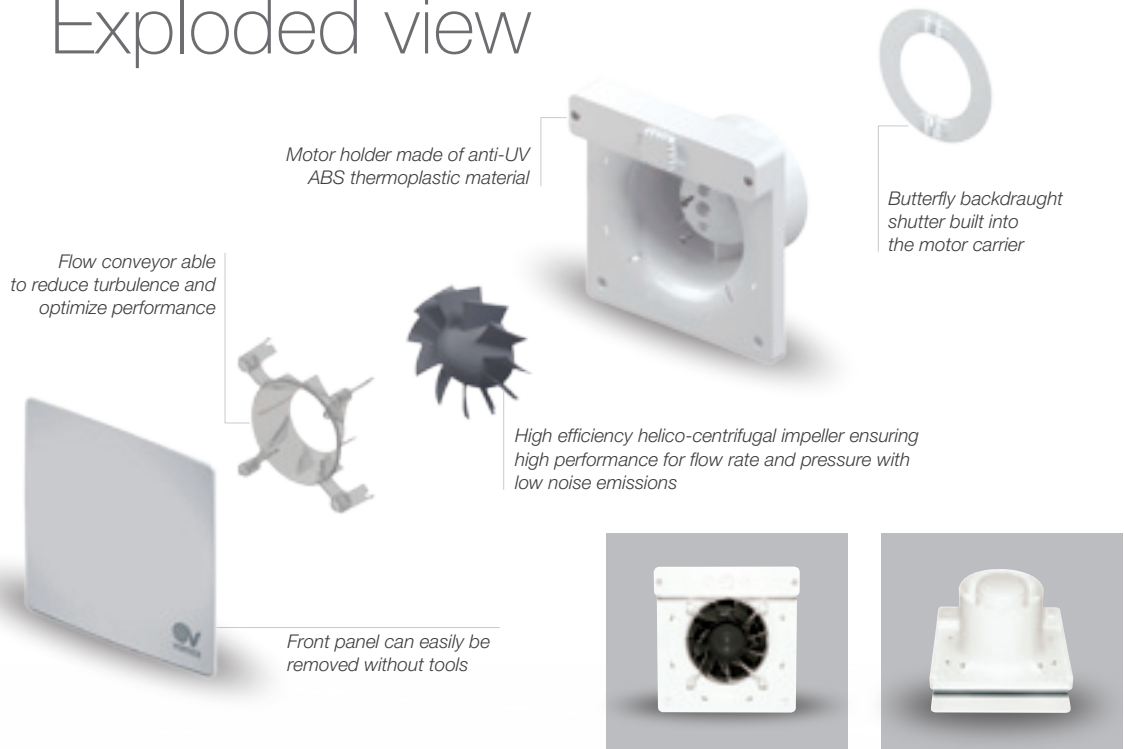
Models	Code	V ~ 50 Hz	W max	A max	RPM max	Max Airflow		Max Pressure		Lp dB(A)
						m ³ /h	l/s	mmH ₂ O	Pa	3m
MEX 100/4" LL 1S	11313	230	9	0.052	2175	90	25	4	39,23	26.9
MEX 100/4" LL 1S T	11314									
MEX 120/5" LL 1S	11333		13	0.095	2075	175	48.6	5	49.04	32.3
MEX 120/5" LL 1S T	11334									

Performance curves

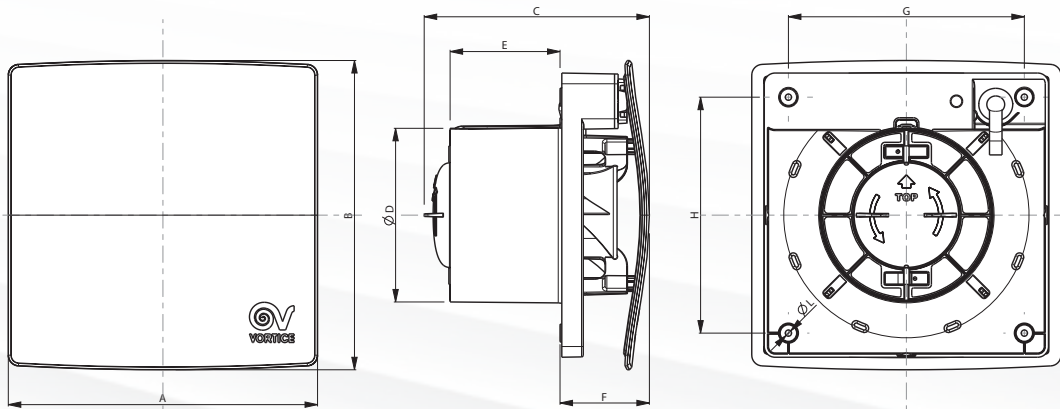




Exploded view



Dimensions



Models	A	B	C	Ø D	E	F	G	H	Ø L	Kg
MEX 100/4" LL 1S	173	173	126	98	61.5	50	132	132	3.5	0.60
MEX 100/4" LL 1S T										
MEX 120/5" LL 1S	193	193	138	119	71	53	152	152	3.5	0.77
MEX 120/5" LL 1S T										

Dimensions (mm)

Punto Evo Range



Punto Evo

Suitable for wall and ceiling installation; designed for stile air extraction through walls or short ducts with two-speed.
5 version: Standard, Timer (T), Advanced Timer (TP), Humidity Control (HCS), Infrared Motion Sensor (PIR).



Punto Evo ES

ES versions equipped with brushless EC motors for even lower power consumption.
Two-speed motors, with ball bearings, guaranteed for 30,000 hours of continuous operation.



Punto Evo Gold

The GOLD versions of PUNTO EVO feature a stylish metallic mirror finish in four colour nuances (Pink, Yellow, Black and White Gold) obtained through advanced technologies, providing an attractive and distinctive style, durability and wear resistance.

Punto Evo

Models	Code
ME 100/4" LL	11260
ME 100/4" LL T	11264
ME 100/4" LL TP	11261
ME 100/4" LL TP HCS	11262
ME 100/4" LL TP PIR	11263
ME 120/5" LL	11270
ME 120/5" LL T	11274
ME 120/5" LL TP	11271
ME 120/5" LL TP HCS	11272
ME 120/5" LL TP PIR	11273

Punto Evo ES

Models	Code
ME 100/4" LL ES	11268
ME 120/5" LL ES	11269

Punto Evo Gold

Models	Code
ME 100/4" LL YELLOW GOLD	11306
ME 100/4" LL PINK GOLD	11307
ME 100/4" LL BLACK GOLD	11308
ME 100/4" LL WHITE GOLD	11309
ME 100/4" LL T YELLOW GOLD	11316
ME 100/4" LL T PINK GOLD	11317
ME 100/4" LL T BLACK GOLD	11318
ME 100/4" LL T WHITE GOLD	11319

Predstavništvo za Srbiju
AIRTREND Ltd.
Kumanovska 14
11000 Beograd, Srbija
Telefon +381 (0)11 383 6886, 308 5740
Telefax +381 (0)11 344 4113
E-mail gobrid@eunet.rs
www.airtrend.rs

Distribucija i prodaja
KOVENT
Kumanovska 14
Tel: 011 383 6886, 308 5740
Fax: 011 344 4113
E-mail office@kovent.rs
www.kovent.rs

